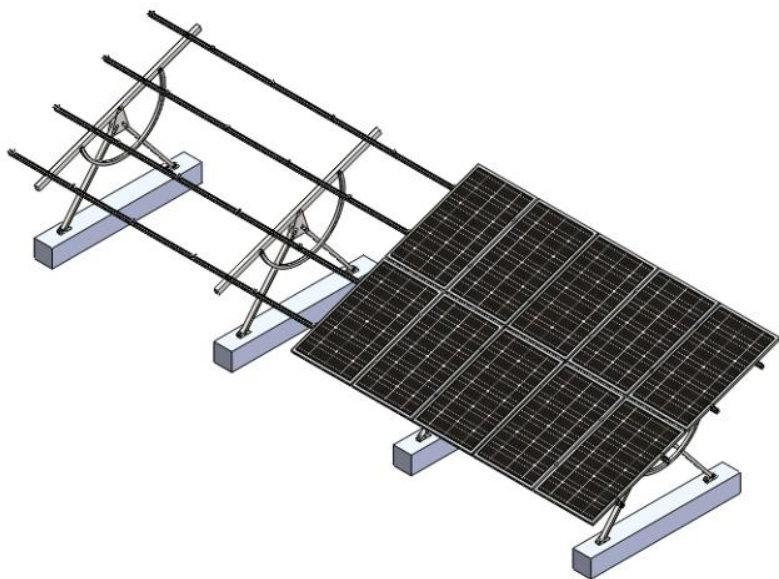


AG1(Angle adjustable Ground PV Mounting System1):



Technical Data and Requirement:

Technical Data	Requirement
<ol style="list-style-type: none">1. Wind Load: 34m/s.2. Snow Load: 0.4KN/ m².3. Span Range: 2.3m~3.1m.4. Warranty: 10 years.5. Installation Angel Error Range: $\pm 2^\circ$.6. Adjust Angle range: 20 °、 30 °、 40 °.	<ol style="list-style-type: none">1. Application: Open Ground.2. Rail Materia: Hot zincification Steel (Q235B).3. Screw Bolt、 Screw Nut Material: Hot-dip galvanized technology.4.Solar Panel: Framed or Frameless.5.Installation Direction: vertical or horizontal.6.Design Standard: GB50009-2012,DIN1055,IBC2006, AS/NZS1170.